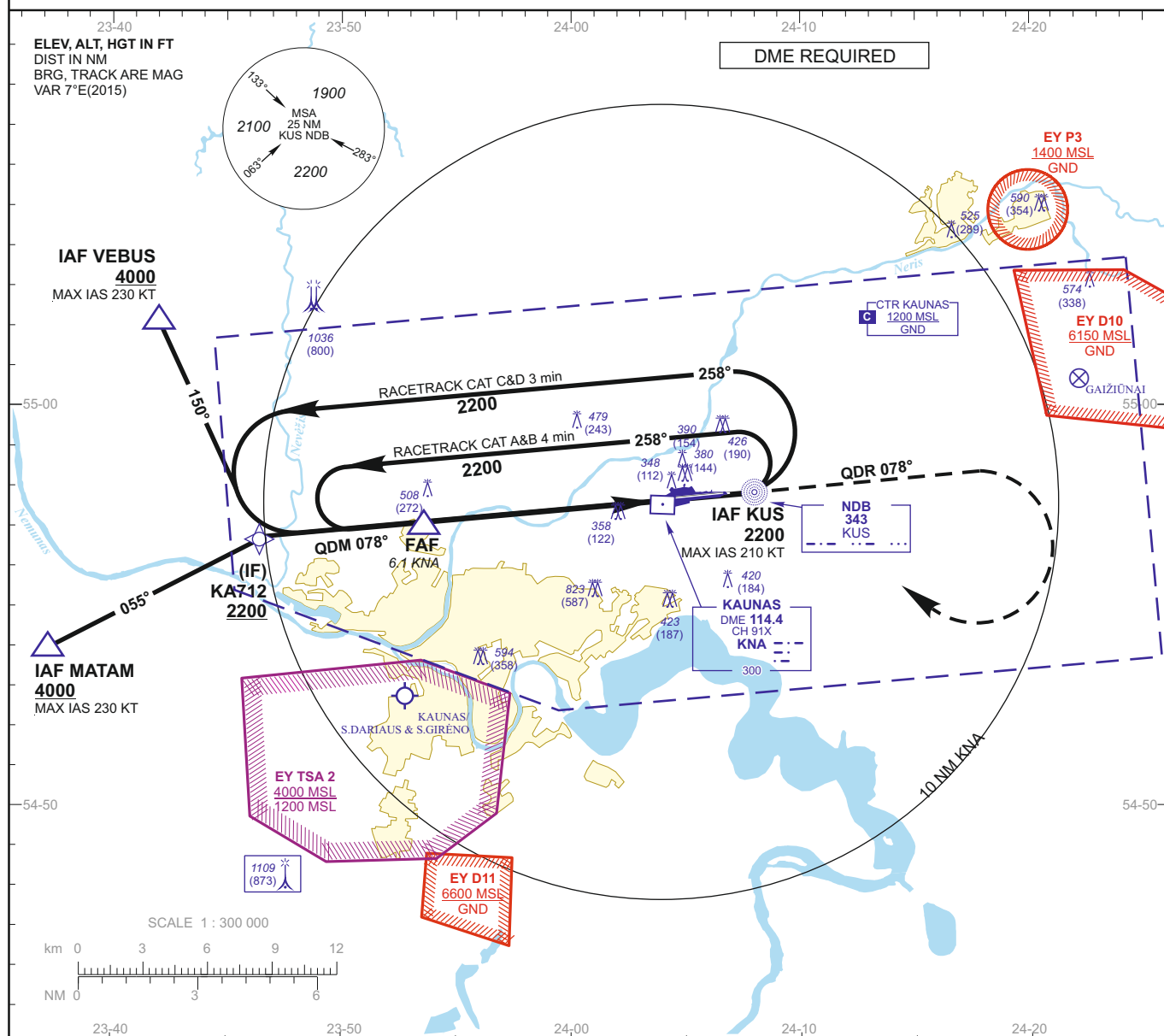
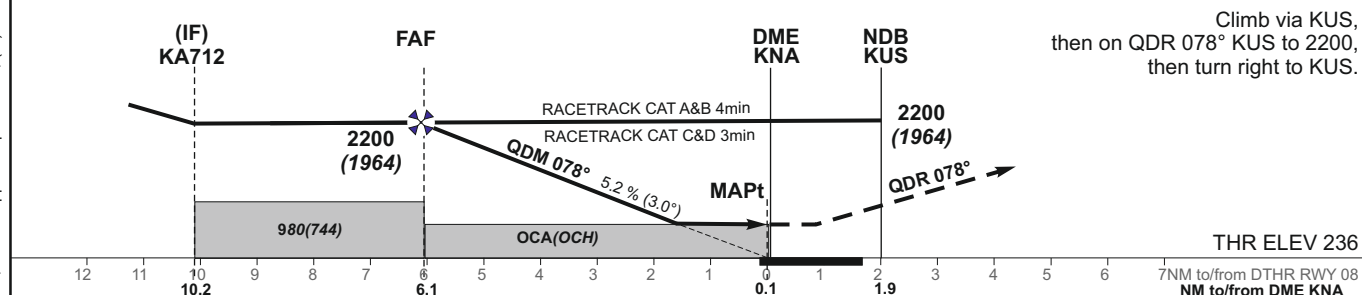


INSTRUMENT APPROACH
CHART - ICAOAERODROME ELEV 256
HEIGHTS RELATED TO
THR RWY 08 - ELEV 236TWR 124.200
118.500
ATIS 129.050KAUNAS
NDB RWY 08

TRANSITION ALT 5000

MISSED APPROACH PROCEDURE

Climb via KUS,
then on QDR 078° KUS to 2200,
then turn right to KUS.

OCA(OCH)		A	B	C	D	DIST DME KNA				5	4	3	2
STRAIGHT-IN APPROACH	NDB	810 (574)				Altitude				1850	1530	1220	900
	NDB/DME	760 (524)				Height				(1614)	(1294)	(984)	(664)
CIRCLING		see EYKA-AD-2.24-40 - 1				Timing not authorized for defining the MAPt							
Remark: In case of NDB APP only-proceed to IAF KUS, execute IAC.						GS	Kts	80	100	120	140	160	180
						FAF-MAPt 6.1 NM	min:sec	4:35	3:40	3:03	2:37	2:17	2:02
						Rate of descent	ft/min	415	520	625	730	835	940
						For data tabulation see verso							

KAUNAS
RWY 08

AERONAUTICAL DATA TABULATION

NDB INSTRUMENT APPROACH from IAFs(KUS, MATAM, VEBUS)	
FIX/POINTS	COORDINATES
MATAM (IAF) - BRG 070.72° KUS / 15.74 NM KNA	54 54 08.9N 023 37 22.7E
VEBUS (IAF) - BRG 099.97° KUS / 13.40 NM KNA	55 02 19.2N 023 42 11.7E
KUS (IAF) - 1.94 NM KNA	54 57 56.6N 024 07 18.7E
KA712 (IF) - BRG 078.28° KUS / 10.22 NM KNA	54 56 53.3N 023 46 18.4E
KA711 (FAF) - BRG 078.28° KUS / 6.13 NM KNA	54 57 14.9N 023 53 22.5E
MAPt - BRG 078.28° KUS / 0.07 NM KNA	54 57 46.4N 024 03 51.0E
KNA DME	54 57 37.4N 024 03 59.1E
THR RWY 08	54 57 45.60N 024 03 34.16E
DTHR RWY 08	54 57 46.43N 024 03 51.01E
Final approach descent angle: 2.98°	